

X-505 6B25.70
S3 SRC ESD

DYNAMIC
LINE | X-5

SIZES 36 - 48



X-BALANCE PRO

The precise foothold for stability.

SMOOSH
REBOUND LAYER

360° system designed to absorb shock in the heel.

NUBUCK VEGAN

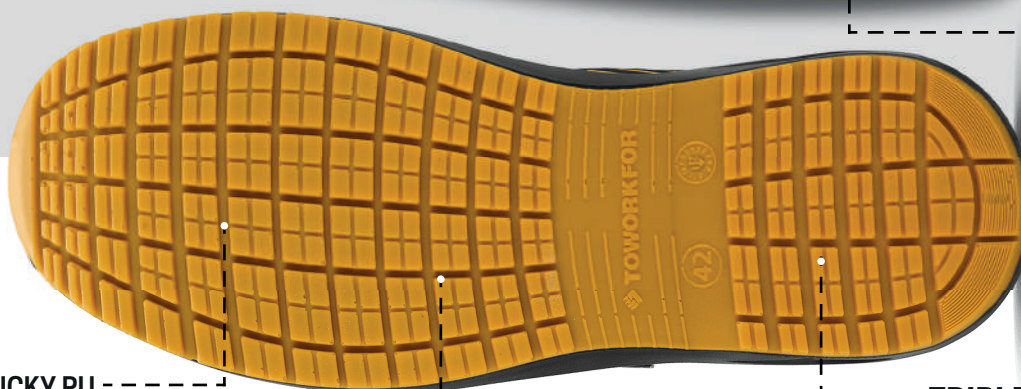
Soft treated leather, very breathable that significantly increases the level of comfort. Excellent resistance and durability.

ALUMINIUM TOE CAP

Lightweight toe cap able to resist against pressure up to 200 Joules. Rubber coating for extra protection and easy cleaning.

CARBON PRO

Best conductive foam for maximum performance with lighter and high impulse properties.



FLOAT

The high tenacity fabrics for zero perforation give strong flexibility and lightness.

HARD STICKY PU

Strategically positioned in the areas of most wear, to increase durability.

CLEATS

Open cleats for a better fluid dispersion.

TRIPLE DENSITY PU SOLE

Extremely soft and comfortable PU midsole in combination with hard PU outsole which provides great grip.



ALUMINIUM TOE CAP



FLOAT INSOLE



RESISTANCE TO WATER ABSORPTION



ELETROSTATIC DISCHARGE

SMOOSH
REBOUND LAYER

X-BALANCE PRO

NORMS EN ISO 20345:2011

S3 - Closed heel area with the following characteristics:

- E** - Heel energy absorption
- A** - Antistatic footwear
- FO** - Resistance to fuel oil of the outsole
- P** - Penetration resistance sole
- WRU** - Water penetration resistant uppers

ADDITIONAL CHARACTERISTICS:

- SRC** - Slip resistance on ceramic + sodium lauryl sulfate and steel + glycerin
- ESD** - Electrostatic Discharge (EN 61340-5-1)

ADVANTAGES

- Light | Comfortable | Breathable | Versatile | Sporty Look |
- Excellent anti-slip characteristics | Water absorption resistant materials

WORKING ENVIRONMENT

- Outdoor Jobs | Logistics | Administrative | Shopkeeper |
- Warehouse